



UNIVERSITY *of* MARYLAND
UPPER CHESAPEAKE HEALTH

***The Future of Health Care
Services for Northeastern
Maryland***

Our Vision for the Future

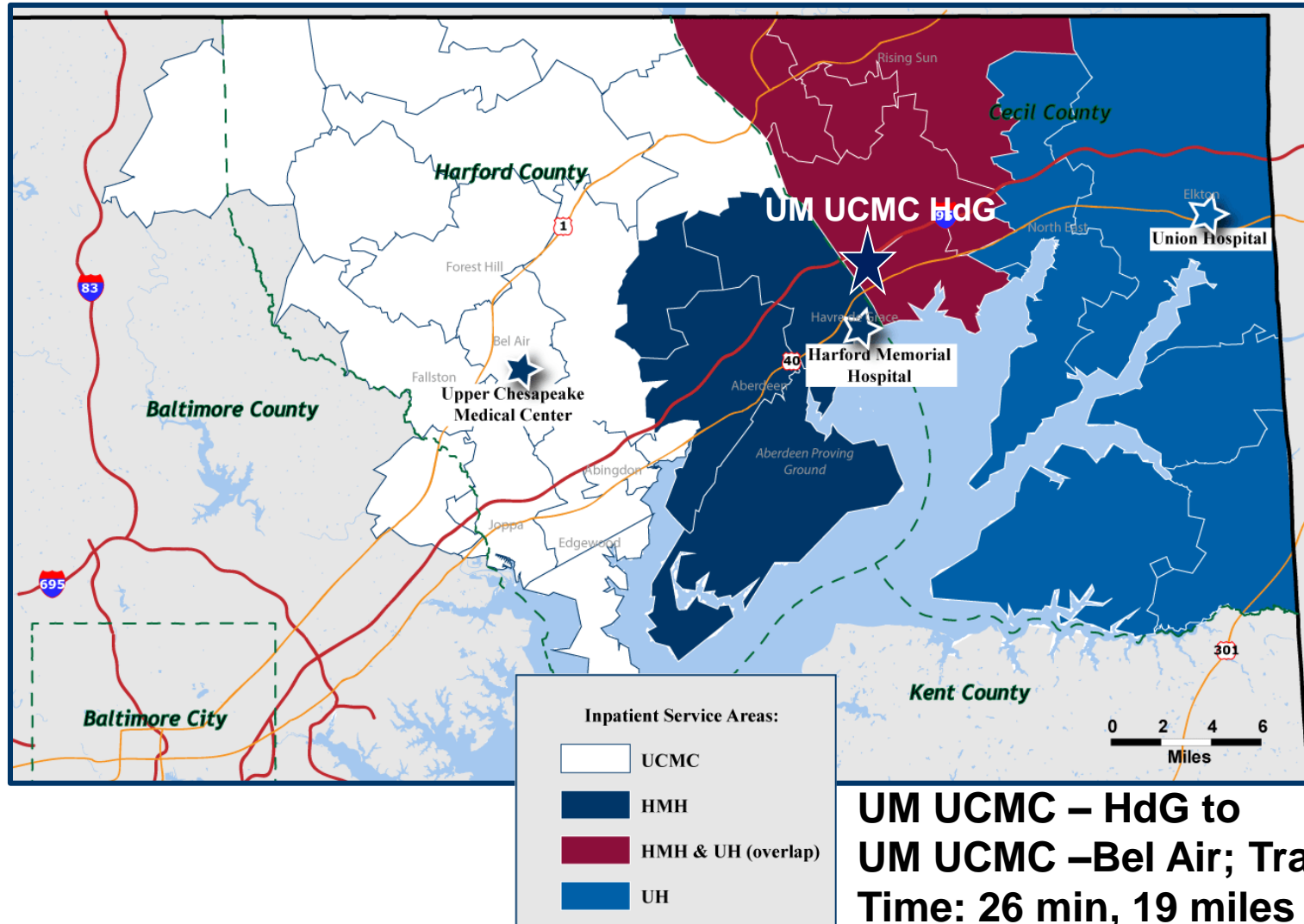
Vision: Create an optimal patient care delivery system for the future health care needs of both Harford and Cecil county residents, a population of 360,000

- Our vision will provide care for patients in the right setting at the right time for an improved cost
- Key strategies include development of Bulle Rock property, expansion of UCMC, and service placement and coordination with Union Hospital (Elkton)
- Timeframe for the development and implementation is FY 2016 – 2020.
- \$180+ Million investment will be brought to our community

Our Plan

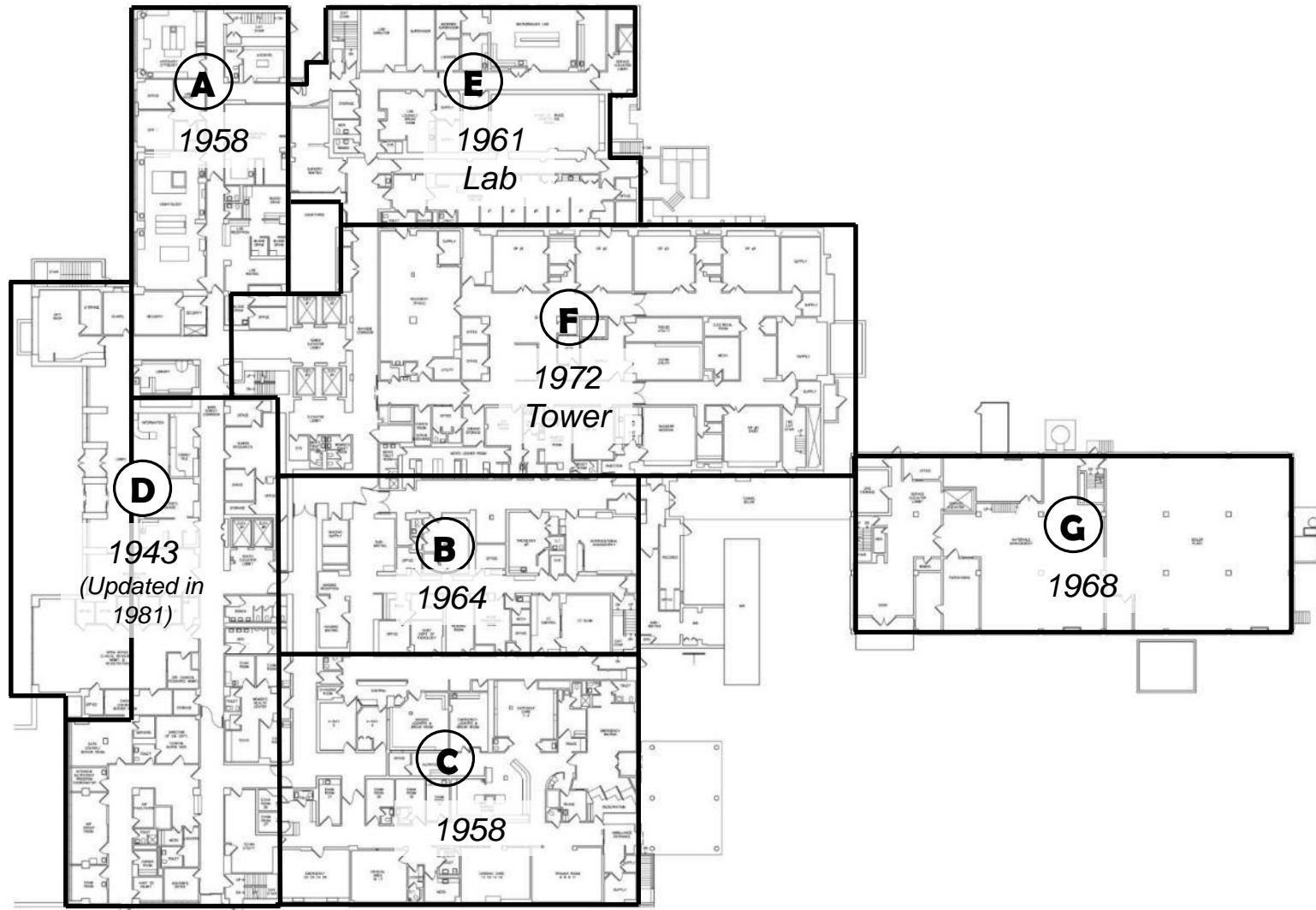
- ❑ Replace UM Harford Memorial with new UM Upper Chesapeake Medical Center – Havre de Grace focused on expanding behavioral health services, emergency services with short stay beds and comprehensive outpatient care services
- ❑ Consolidate existing UM Harford Memorial inpatient, intensive care and surgical services to UM Upper Chesapeake Medical Center – Bel Air
- ❑ To be completed by 2020 timeframe

The combined UH and UCH service areas cover Harford and Cecil Counties.





HMH – Existing Conditions: History of Construction and Building/Wing Designations



UM HMH Current Observations

- Building well beyond its useful life
- Numerous infrastructure issues
- Renovations/additions considered but too costly
- Site is landlocked/difficult to access/provides limited opportunity for growth
- Physician recruitment and retention challenges





UNIVERSITY of MARYLAND
UPPER CHESAPEAKE HEALTH

The Dilemma

Why Now – Dynamics Driving Action

- Rapidly changing health care environment
- Union Hospital collaboration
- UMMS merger
- Physician manpower challenges
- Unmet behavioral health needs
- Innovation/forward thinking/creativity



Common Cases Today

❑ Behavioral Health

- One of the largest issues we have in our community (and nation) and we need to expand our efforts at UM HMH that we started 20 years ago.
- The need for services for those with mental health and/or substance abuse issues is staggering – affecting 1 in 5 people in the U.S.

Our Plan is a Better Care Strategy

- ❑ Behavioral health team members will now have the contemporary tools and environments to treat patients utilizing national best practices that aging facilities (often reconfigured medical/surgical areas) are unable to provide.

- ❑ UM UCH's plan includes continuing our commitment to providing behavioral health services to our regional community in a state-of-the-art, self-contained and secure treatment center that allows a patient to transition through multiple stages of treatment without moving to multiple locations.

Common Cases Today

All of these issues (and many more) get worse over time and should have ongoing medical care in an outpatient setting to prevent emergencies:

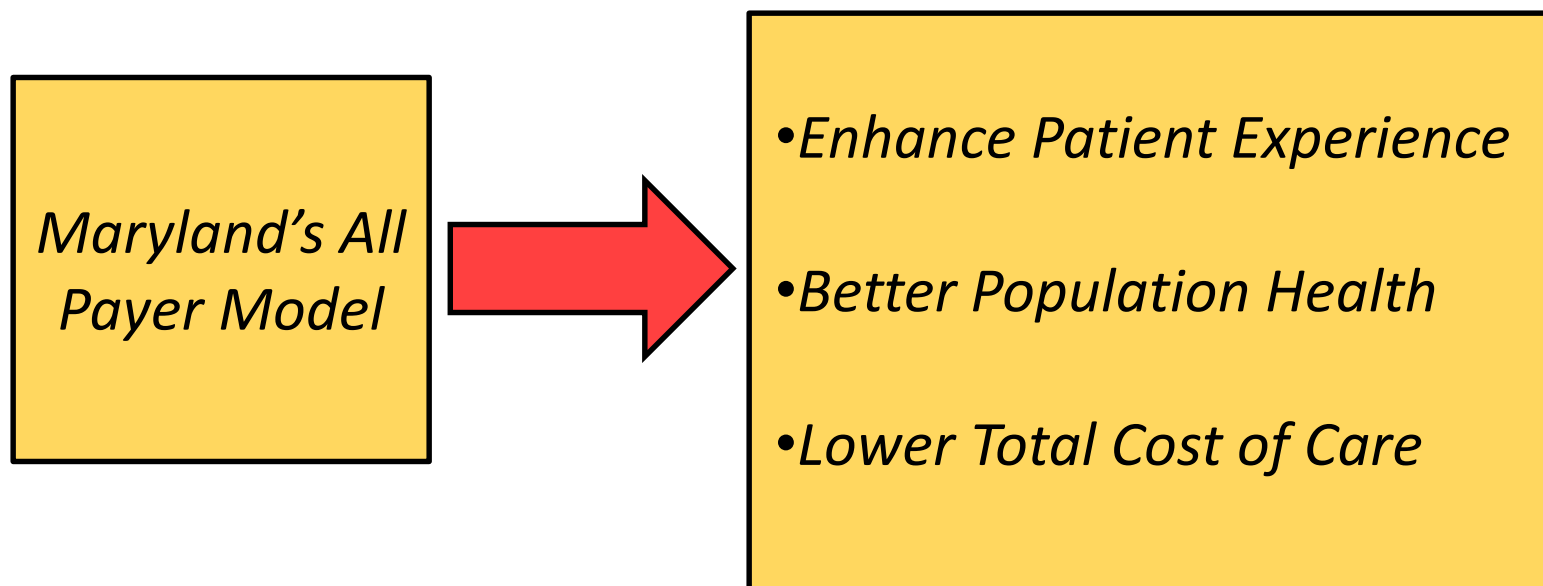
- Chest Pain
- Diabetes
- Chronic Obstructive Pulmonary Disease (COPD)
- Pain Management
- Congestive Heart Failure

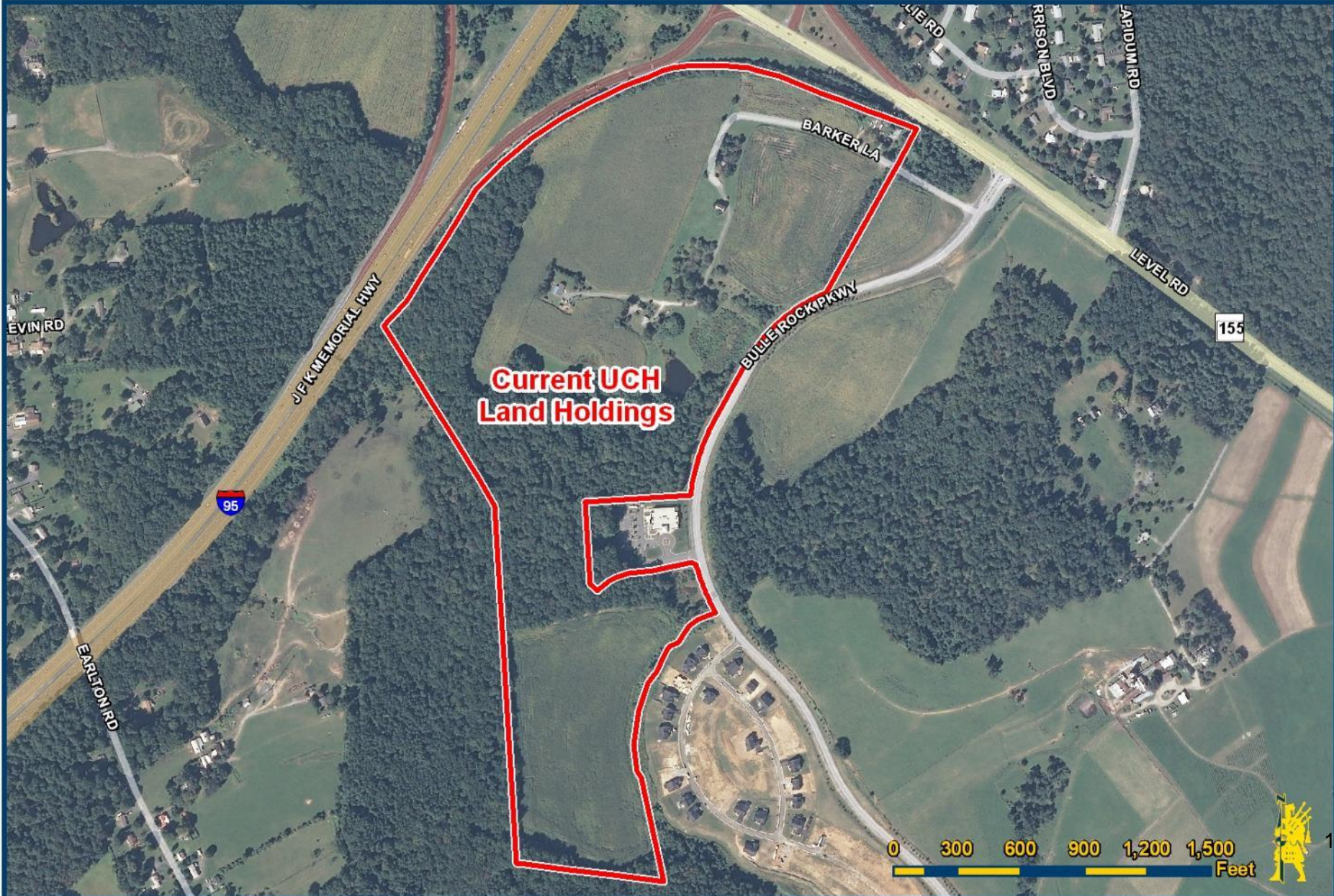
Our Plan - Better Care Strategy

- ❑ By providing outpatient services and other health related partners to our new campus, patients with chronic conditions can be treated close to home.
- ❑ Regular visits allow for effective monitoring, treatment and education of the patient/care giver.
- ❑ Health care plans begin before an emergency so that the patient has less stressful prolonged stays in the hospital and an improved quality of life.

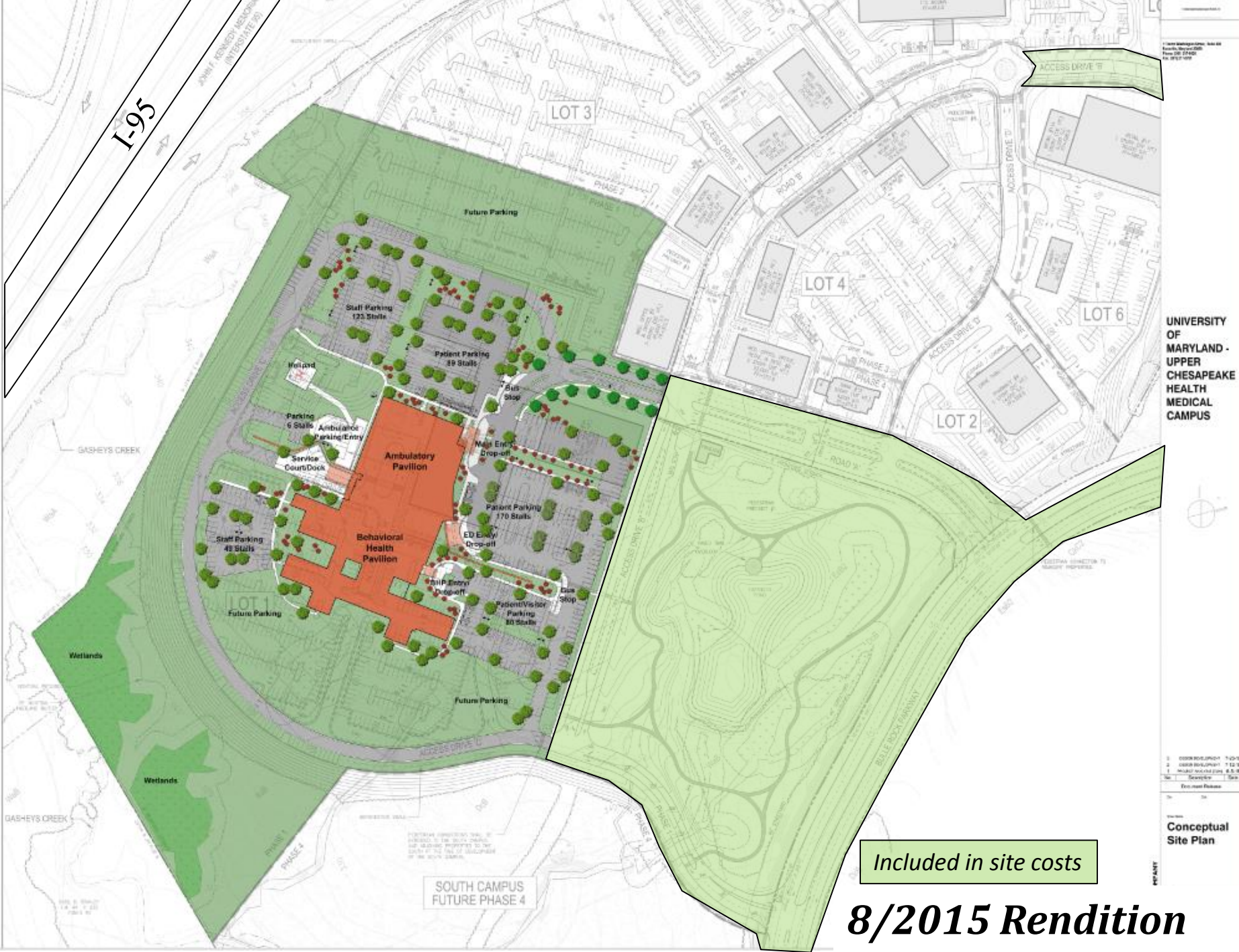
Planning Aligns with State of Maryland

- Focused effort to improve health, improve outcomes and control costs *for patients*
- Patients and the community benefit greatly when Upper Chesapeake Health provides the right services and reduces avoidable utilization through better care





The information contained herein was furnished to us by sources we deem to be reliable, but no warranty or representation is made to the accuracy thereof.



UNIVERSITY OF MARYLAND - UPPER CHESAPEAKE HEALTH CAMPUS

Included in site costs

8/2015 Rendition

1.0000000000 1/1/15
 2.0000000000 1/12/15
 3.0000000000 6/5/15
 No Selection Set
 Project Release
 Date: 8/15/15

Conceptual Site Plan

HP/AMT

I-95

LOT 3

LOT 4

LOT 6

LOT 2

LOT 1

SOUTH CAMPUS FUTURE PHASE 4

UM Upper Chesapeake Medical Center - Havre de Grace



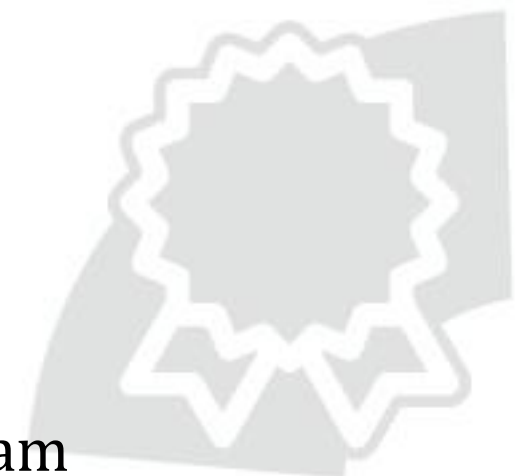
Vision for UM Upper Chesapeake Medical Center – Havre de Grace

- Nationally recognized medical center
- Enhanced services meeting greatest need
- Better access of off I-95
- Contemporary/innovatively designed facilities
- Expandable
- Economic benefits for City of Havre de Grace



UM Upper Chesapeake Medical Center – Havre de Grace

- 194,000 square foot medical center
 - 24/7 full service emergency department
 - Short stay beds for observation
 - Comprehensive behavioral health program
 - Imaging (CT, MRI, US, radiology, nuclear medicine)
 - Cardiology testing
 - Pharmacy
 - Laboratory



UM Upper Chesapeake Medical Center – Havre de Grace (cont'd)

- Rehab (physical therapy, occupational therapy and speech therapy)
- Chemotherapy/infusion, mammography/bone density
- Primary and specialty care physician office space
- Prevention/wellness services
- Walking/jogging trails
- Open space in healing environment

Value in this Approach – A Better Health Care Model

- Contemporary state-of-the art facility
- Addresses recognized behavioral health need
- Consistent positive patient outcomes
- Efficient, high quality care
- Enhanced distribution and access to regionalized specialty services



Value in this Approach

Enhanced Community Benefits

- Development opportunity at Bulle Rock property
- Expanded tax base for City of Havre de Grace
- Expanded infrastructure at Bulle Rock property and surrounding area
- UM HMH property redevelopment



Economic Impact Study

- ❑ The project is set to begin in early 2017 and finish by late 2019. RESI of Towson University conducted a study that estimated during the course of construction and renovations to UM UCH's two facilities, the project will generate over 5,500 jobs; totaling \$770 million in wages, and totaling \$2.1 billion in economic impact for this phase of the project.
- ❑ The renovated and new facilities are anticipated to become operational in 2020. In addition, it is expected that most staff will be moved from UM Harford Memorial Hospital to the UM UCMC – Havre de Grace located near Bulle Rock, or to UM UCMC – Bel Air.
- ❑ Between these two facilities, UMUCH will be supporting more than 3,000 jobs. RESI estimated that the two facilities will continue to support Harford County with over \$800 million in wages and \$2.1 billion in economic impact during the first three years of operations.

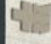
Benefits for Team Members and Physicians

- Modern facilities and equipment
- Physicians can maximize time and efficiency
- Improve physician retention/recruitment
- Increased patient satisfaction/confidence/patient retention within system
- Expanded wellness and prevention services in a central location
- New property conveniently located off I-95 and less than 3 miles from UM Harford Memorial Hospital
- Opportunity for growth and for team members to develop new skill sets

Impact on UM HMH Team Members

- The location of jobs will shift as services are transitioned with focus on high quality care, great service and cost effectiveness. Many current jobs at UM HMH will transfer to the new medical campus, and others will transfer to UM UCMC and Union Hospital.
- In addition, the full development of the new site will generate new jobs from other services that are slated for the new campus.
- Proposed changes will occur over 4-5 years. Leadership will ensure continuity and team member engagement/satisfaction over this time period.



 Upper Chesapeake Health
Patricia D. and M. Scot Kaulman
Cancer Center

 Upper Chesapeake Health



Moving Forward

- Early in planning stages with many details to work out
- Timing is contingent on legislative, regulatory, and financing approvals
- Expect clarity and regulatory approvals during 2016
- The development of the new medical campus will require significant planning in order to achieve a smooth and seamless process.
- UM UCH is committed to working collaboratively with the City of Havre de Grace, Harford County and the State of Maryland on identifying productive new uses for the UM HMH site.

